

Public Safety Assessment (PSA)
Reporting Period: May 26, 2017 – June 30, 2018
In Custody Only

The Public Safety Assessment (PSA) was implemented in Dane County in April 2017 as part of a collaborative assessment project with the Laura and John Arnold Foundation (LJAF) and the Access to Justice Lab (A2J) at Harvard Law School. The PSA was developed by LJAF to assist pre-trial judges gauge the risk a defendant poses by helping to predict the likelihood that an individual will commit a new crime if released before trial, and to predict the likelihood that an individual will fail to return for a future court hearing. The PSA will also flag defendants who present an elevated risk of committing a violent crime.

Dane County is participating in a 2-year (2017-2019) randomized control experiment evaluation of the PSA during pretrial of both bond hearings and initial appearances. All cases that are reviewed at initial appearance will be randomly allocated into two groups: the experimental group for which a PSA will be made available to the court commissioner and a control group for which a PSA will be generated but not made available in court for commissioner review.

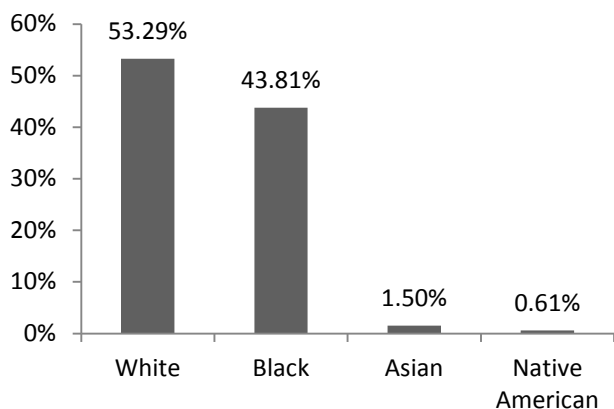
The following report is derived from arrests made during the reporting period. All data presented in this report should not be construed to provide any causal claims related to the PSA and subsequent court decisions. An Appendix is attached to provide comprehensive information on quarter and year-to-date statistics. As of this reporting period there have been:

- 4,129 PSAs generated
- 1,659 (40.18%) are assigned to the experimental group and 1,661 (40.23%) are assigned to the control group.
- PSAs are relevant for defendants who are *in custody* awaiting their initial appearance and does not apply to defendants who have posted bail.

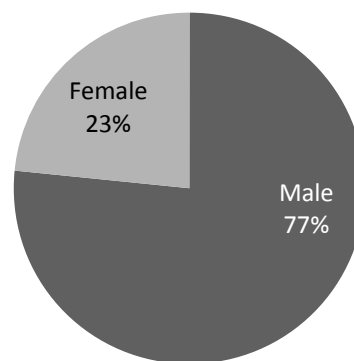
A. Demographic Characteristics

The average age at arrest is about 34 years old. The majority of defendants (3,858) are non-Hispanic or Latino (~93%), 253 (6.13%) defendants have Hispanic or Latino ethnicity.

Race¹

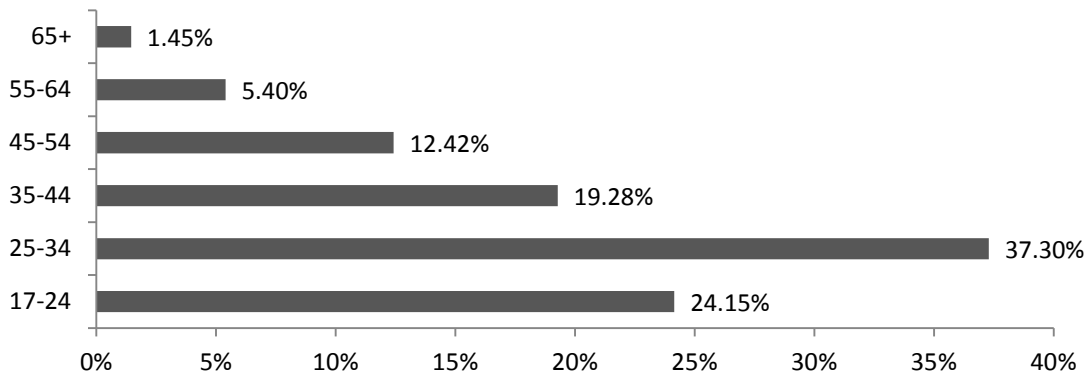


Gender



¹ Race is documented as unknown for 14 defendants.

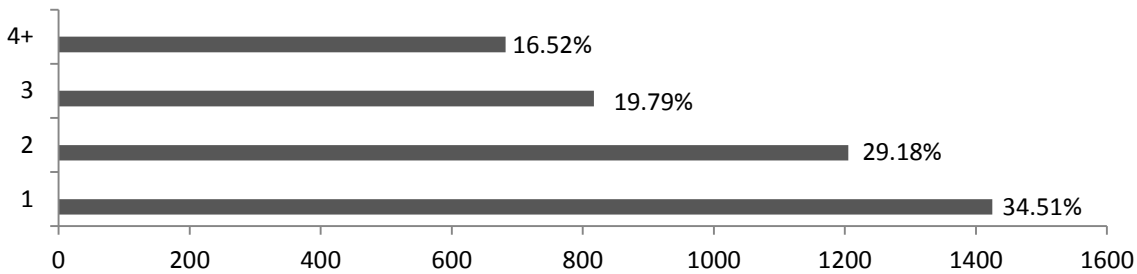
Age at Arrest



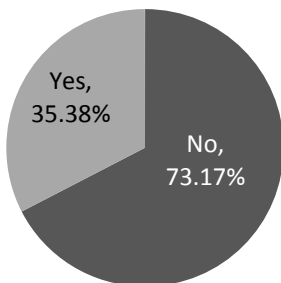
B. Charge Information

These measures are charges from arrest records over the reporting period. PSAs where the most serious charge type is a county ordinance or a non-criminal charge are not included in the study, yet are reported below. The maximum number of arrest charges for a defendant is 30.

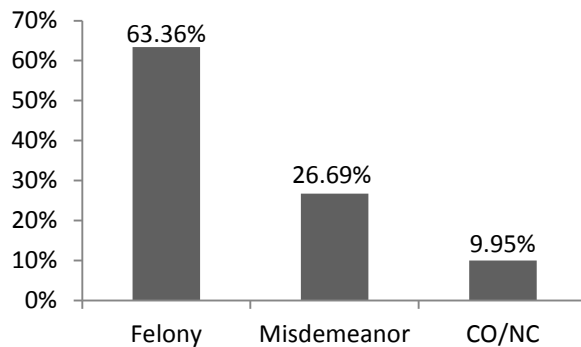
Number of Charges per Arrest



Are Any Charges Violent?



What is the most serious Charge Type?



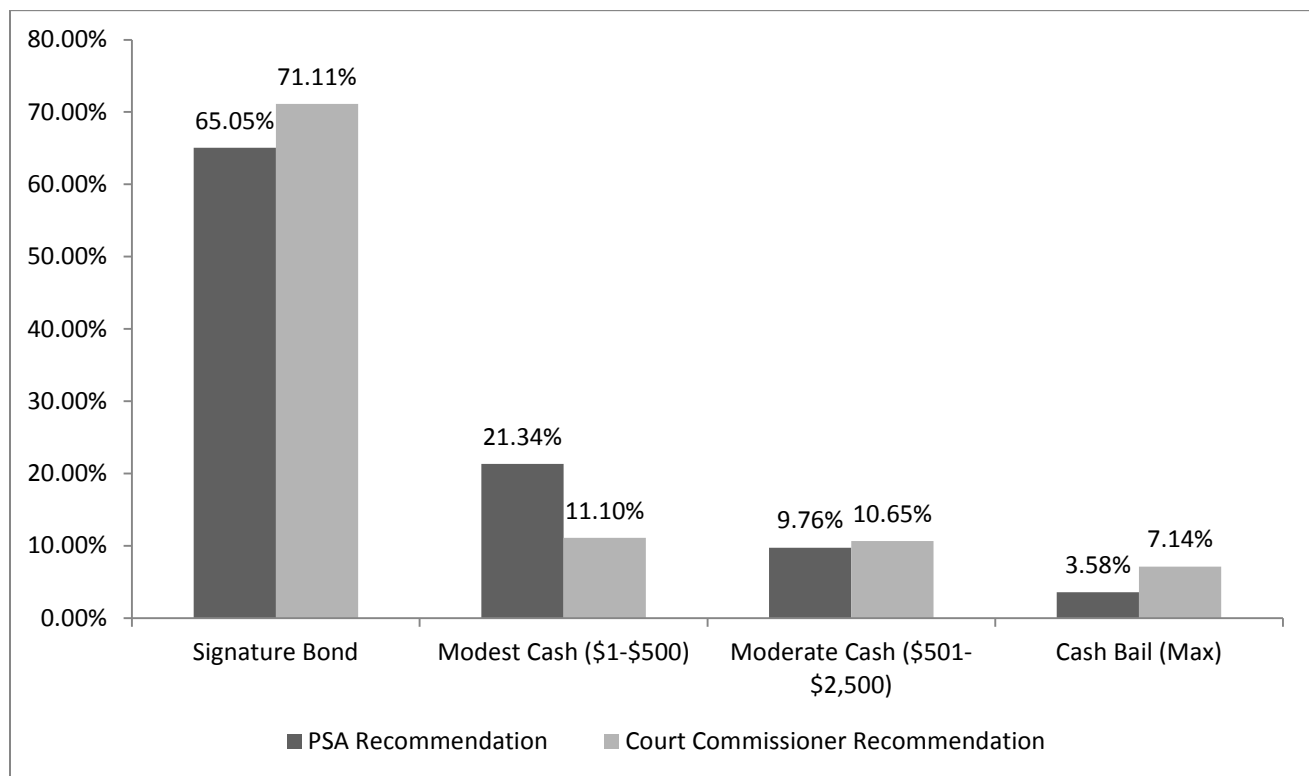
Hold at Arrest

This measure identifies whether a case has a hold at the time of the arrest. The vast majority of defendants (3,232-78%) had no hold. 782 (19%) defendants had a probation and parole hold at the time of arrest. 99 (2.39%) defendants had a hold from another Wisconsin county, while 28 (0.68%) had a hold from another state. 6 (0.14%) defendants had a federal hold. Defendants could have more than one hold at time of arrest.

C. PSA Recommendation & Release Decision by Court Commissioners

The PSA Recommendation indicates the PSAs' release recommendation based on risk factor calculations for defendants. The PSA recommendation is designed to assist decision making during initial appearance. This recommendation may or may not be followed and does not provide information on actual release decisions made by the court commissioner. No PSA recommendation was provided for 11 (0.27%) generated PSAs.

The figure below provides information on actual release decisions made by court commissioners as it compares to the PSA Recommendation. All individuals are in custody at time of initial appearance. No release decision was made for 1,453 (35.19%) PSAs generated and are not included in the graph below. The majority of cases with no release recommendation occur when a defendant was released prior to their first court date (28.10%), charges were reduced below a misdemeanor (29.55%), or for other reasons² (26.52%). Additional reasons could include dismissed cases or if a defendant has not yet had their initial appearance.



² Other reasons for cases with no release decision include: a defendant was released to appear, the District Attorney's office declined to prosecute, a defendant was released without bail, a defendant was referred to the deferred prosecution unit, or the individual paid cash bail.

Appendix
Study Period to Quarter End and 2nd Quarter-2018 Comparison

Demographic Characteristics		Study Period to Quarter End (n=4129)		2 nd Quarter, 2018 (n=993)	
Measure	Description	N	%	N	%
Age at Arrest	17-24	997	24.15%	223	22.46%
	25-34	1540	37.30%	369	37.16%
	35-44	796	19.28%	207	20.85%
	45-54	513	12.42%	121	12.19%
	55-64	223	5.40%	63	6.34%
	65+	60	1.45%	10	1.01%
Gender	Male	3163	76.60%	768	77.34%
	Female	966	23.40%	225	22.66%
Race	White	2179	52.77%	507	51.06%
	Black	1833	44.39%	459	46.22%
	Asian	59	1.43%	12	1.21%
	Native American	25	0.61%	6	0.60%
	Alaska Native	0	0.00%	0	0.00%
	Native Hawaiian/Pacific Islander	0	0.00%	0	0.00%
Ethnicity	Hispanic/Latino	253	6.13%	70	7.05%
	Non-Hispanic/Latino	3858	93.44%	916	92.25%

Charge Information		Study Period to Quarter End (n=4129)		2 nd Quarter, 2018 (n=993)	
Measure	Description	N	%	N	%
Number of Charges	1	1425	34.51%	341	34.34%
	2	1205	29.18%	291	29.31%
	3	817	19.79%	215	21.65%
	4+	682	16.52%	146	14.70%
Any Charge Violent	No	3021	73.17%	719	83.12%
	Yes	1108	35.38%	274	31.68%

Hold at Arrest Information ³	Study Period to Quarter End (n=4129)		2 nd Quarter, 2018 (n=993)	
	N	%	N	%
No Hold	3232	77.94%	762	76.74%
Probation and Parole	782	18.86%	198	19.94%
Other WI county	99	2.39%	25	2.52%

³ A defendant can have more than one hold at arrest

Other State	28	0.68%	7	0.70%
ICE	5	0.12%	1	0.10%
USMS	1	0.02%	0	0.00%
Other	0	0.00%	0	0.00%

PSA Recommendation	Study Period to Quarter End (n=4129)		2 nd Quarter, 2018 (n=993)	
	N	%	N	%
Signature Bond	2686	65.05%	656	66.06%
Cash Bail (max)	881	21.34%	208	20.95%
Modest Cash Bail (\$1-\$500)	403	9.76%	97	9.77%
Moderate Cash Bail (\$501-\$2,500)	148	3.58%	27	2.72%
Not Provided (Null)	11	0.27%	5	0.50%

Court Commissioner Release Decision	Study Period to Quarter End (n=4129)		2 nd Quarter, 2018 (n=993)	
	N	%	N	%
Signature Bond	1903	46.09%	483	48.64%
Cash Bail (max)	297	7.19%	69	6.95%
Modest Cash Bail (\$1-\$500)	285	6.90%	64	6.45%
Moderate Cash Bail (\$501-\$2,500)	191	4.63%	38	3.83%
Not Provided (Null)	1453	35.19%	339	34.14%